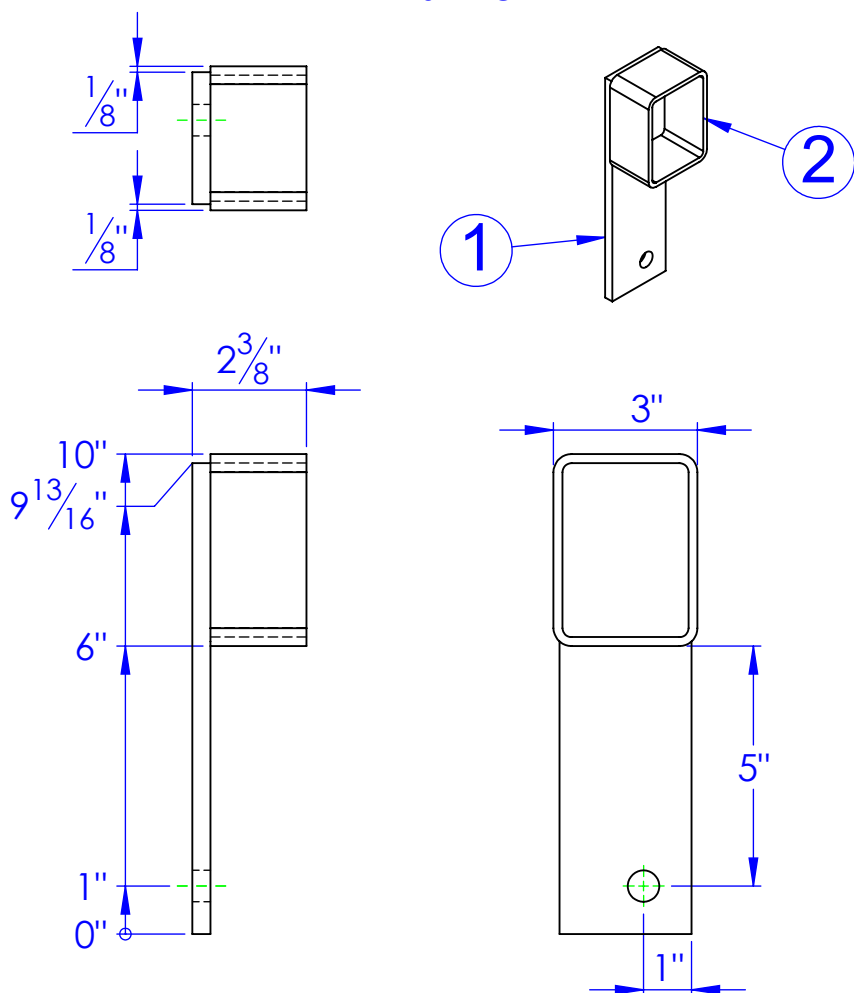


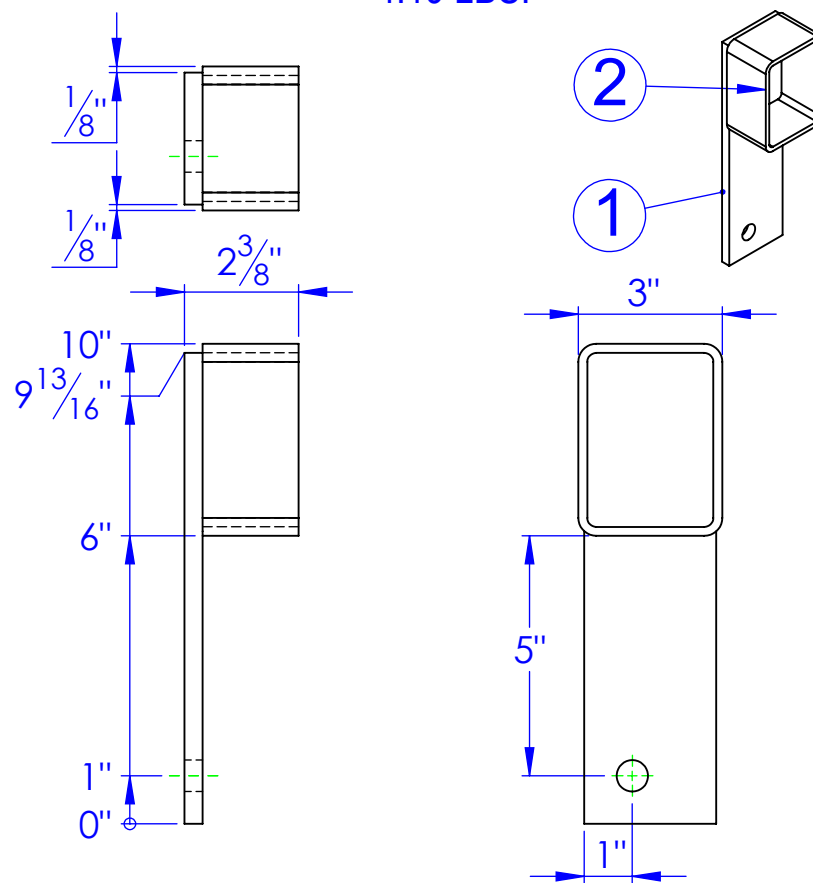
ITEM NO.	PART NUMBER	DESCRIPTION	MATERIAL	DRAWING #	QTY.
1	FP-LL STRAP 9.8125	LEVEL LOK MOUNTING STRAP 9-13/16"	ST-FI 3/8x2-3/4"	90-2824	1
2	FP-RT 4X3X.1875 L 2	LENGTH 2"	RT 4x3x3/16"	STOCK	1

FP-DLL2-2 DS
CENTER BRKT, DLL-2, WLDMT DRIVER SIDE
4.19 LBS.



ITEM NO.	PART NUMBER	DESCRIPTION	MATERIAL	DRAWING #	QTY.
1	FP-LL STRAP 9.8125	LEVEL LOK MOUNTING STRAP 9-13/16"	ST-FI 3/8x2-3/4"	90-2824	1
2	FP-RT 4X3X.1875 L 2	LENGTH 2"	RT 4x3x3/16"	STOCK	1

FP-DLL2-2 PS
CENTER BRKT, DLL-2, WLDMT PASSENGER SIDE
4.19 LBS.



REV.	DESCRIPTION	DATE
A	UPDATED TO NEW DWG FROM 10-1827 C	1/22/2013

PROPRIETARY AND CONFIDENTIAL
 THE INFORMATION CONTAINED IN THIS DRAWING IS THE SOLE PROPERTY OF TRIPLE C INC. ANY REPRODUCTION IN PART OR AS A WHOLE WITHOUT THE WRITTEN PERMISSION OF TRIPLE C INC. IS PROHIBITED.

DIMENSIONS ARE IN INCHES
 TOLERANCES:
 FRACTIONAL $\pm 1/16$
 ANGULAR: MACH ± 1 BEND \pm
 TWO PLACE DECIMAL ± 0.10
 THREE PLACE DECIMAL ± 0.005

MATERIAL --
 DO NOT SCALE DRAWING

NAME	DATE
DRAWN HEATH	6/4/2012
PART #	
ASM #	SEE DWG

**CENTER BKT,
 DLL-2 WLDMT**

P.O. BOX 248,
 SABETHA, KS 66534

TRIPLE C
 INC.

SIZE	DWG. NO.	REV.
A	90-1822-24	A
SCALE: 1:4	WEIGHT:	SHEET 1 OF 1